

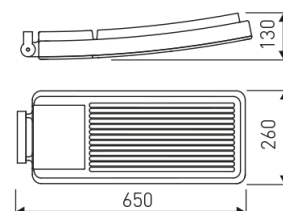


#### Dimensions

|                         |                 |
|-------------------------|-----------------|
| Product dimensions (mm) | 260 x 650 x 130 |
| Packing dimensions (mm) | 310 x 705 x 155 |
| Net weight (g)          | 10500           |
| Gross weight (Kg)       | 11              |

#### Scheme

#### Scheme



#### Product

|                             |                    |
|-----------------------------|--------------------|
| Real power (W)              | 45                 |
| Real luminous flux (Lm)     | 3060               |
| Luminous efficiency (Lm/W)  | 68                 |
| Beam angle (°)              | 130 x 45           |
| Life time (h)               | 50000              |
| IP                          | 66                 |
| IK                          | 7                  |
| Electrical class insulation | Class 1            |
| Operating temperature       | from -20°C to 35°C |
| Electrical feeding          | 220..240V, 50/60Hz |
| Colour                      | Grey               |
| Energy efficiency class     | A                  |

#### Control gear

|                       |                         |
|-----------------------|-------------------------|
| Control gear included | Yes                     |
| Control gear          | Electronic Control Gear |
| Factor de potencia    | 0,9                     |

#### Light source

|                            |      |
|----------------------------|------|
| Light source included      | Yes  |
| Light source               | Led  |
| Nominal power (W)          | 40   |
| Nominal luminous flux (Lm) | 3500 |
| Colour temperature (K)     | 4000 |
| Colour consistency (SDCM)  | 3    |
| CRI                        | 70   |

#### Accessories

|             |   |
|-------------|---|
| 15/7150/221 | End pole (to replace luminaires in poles of Ø60 mm) |
|-------------|---|

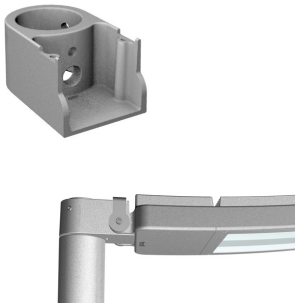
## luminaire from the TROLL family Wind.

#### DESCRIPTION

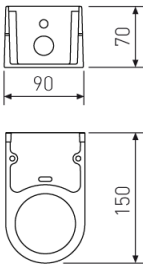
luminaire from the TROLL family Wind setting an advanced and innovative thermal balance system through passive dissipation with stable colour temperature of 4000° K (neutral white) optimised to be used as lighting outdoor areas such as public squares, parks, gardens or outdoor areas of sport buildings. Designed for pole installed or wall mounted. Luminaire body built in die-cast aluminium finished in grey. Luminaire is IP66and IK07. Luminaire built-in an independent lens system for each led with an angle beam of 130° x 45°. Luminaire sets a 45 W LED source with CRI higher than 65 % and a chromatic dispersion lower than 3 SMCD. Fixture has a luminous flux of 3060 Lm, with an efficiency of 68 Lm/W and a total consumption of 45 W. The average life for the luminaire is 50000 h (stabilised at a minimum flux of 70 % from the original). Luminaire built-in an auxiliary gear ON/OFF fed at 220-240V; 50/60 Hz.

|                           |   |
|---------------------------|---|
| Item code                 | 7125N/50/221  |
| Product type              | OUT   |
| Category                  | Poles   |
| Family                    | Wind  |
| Subfamily                 | Wind  |
| Materials                 | Luminaire body built in die-cast aluminium.                 |
| Optical system            | Luminaire built-in an independent lens system for each led. |
| Installation instructions | Luminaire designed for pole installed or wall mounted.      |

Picture



Scheme



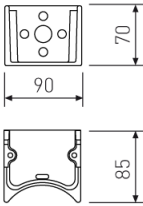
15/7151/221

End / Medium pole. (For pole 17/...)

Picture



Scheme



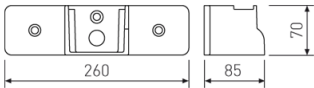
15/7152/221

Wall-mounted version.

Picture



Scheme



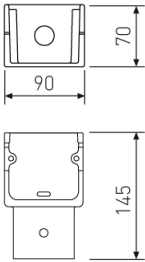
15/7153/221

End pole (to replace luminaries in poles)

Picture



Scheme



|             |            |
|-------------|------------|
| 17/7154/221 | h=4m 0 90  |
| 17/7154/87  | h=4m 0 90  |
| 17/7156/221 | h=6m 0 102 |
| 17/7156/87  | h=6m 0 102 |
| 17/7158/221 | h=8m 0 102 |
| 17/7158/87  | h=8m 0 102 |